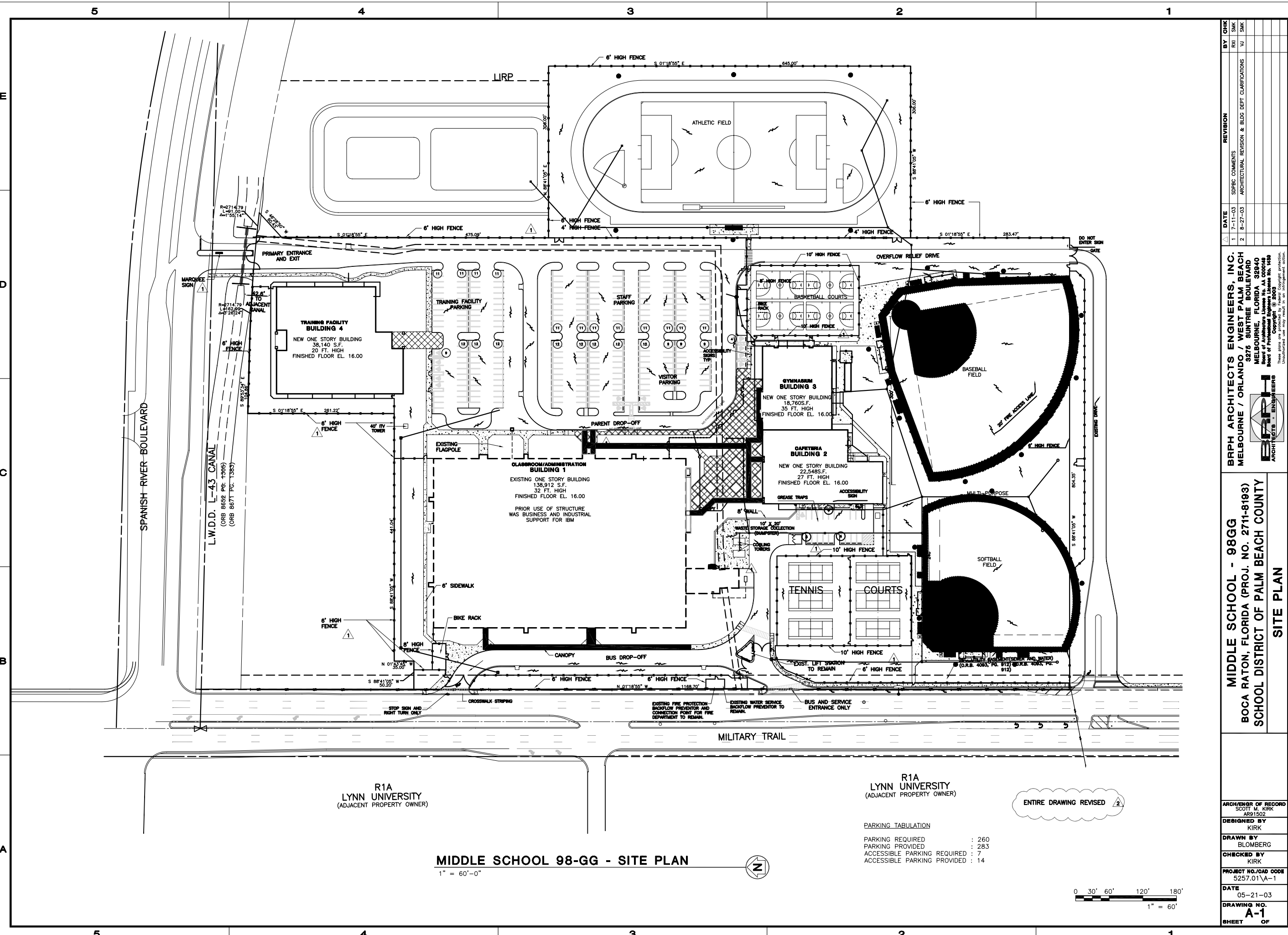


P:\5257.02\current\A-1.dwg, 04/15/2005 10:20:48 AM, rxi



MIDDLE SCHOOL 98-GG - SITE PLAN

1" = 60'-0"

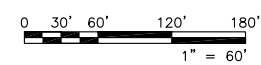


R1A  
LYNN UNIVERSITY  
(ADJACENT PROPERTY OWNER)

PARKING TABULATION

PARKING REQUIRED	: 260
PARKING PROVIDED	: 283
ACCESSIBLE PARKING REQUIRED	: 7
ACCESSIBLE PARKING PROVIDED	: 14

ENTIRE DRAWING REVISED 2



DATE	REVISION	BY	CHK
7-11-03	SPBC COMMENTS	RXI	SMK
8-27-03	ARCHITECTURAL REVISION & BLDG DEPT CLARIFICATIONS	VJ	SMK

**BRPH ARCHITECTS ENGINEERS, INC.**  
 MELBOURNE / ORLANDO / WEST PALM BEACH  
 3276 SUNTIRE BOULEVARD  
 MELBOURNE, FLORIDA 32940  
 Board of Architecture License No. AC 00001149  
 Board of Professional Engineers License No. 15,000  
 Copyright © 2003  
 Under license to the project owner, for use in the project as shown.

**MIDDLE SCHOOL - 98GG**  
 BOCA RATON, FLORIDA (PROJ. NO. 2711-8193)  
 SCHOOL DISTRICT OF PALM BEACH COUNTY  
**SITE PLAN**

ARCHITECT OF RECORD	SCOTT M. KIRK AR91502
DESIGNED BY	KIRK
DRAWN BY	BLOMBERG
CHECKED BY	KIRK
PROJECT NO./CAD CODE	5257.01/A-1
DATE	05-21-03
DRAWING NO.	<b>A-1</b>
SHEET	OF